

# XBOX Series S/X Controller Security Tether Installation Instructions

Thank you for purchasing a game controller security tether from secure entertainment. We have spent years developing this product and hope that it will help secure the controllers in your public gaming space. Please contact us at [info@secure-entertainment.com](mailto:info@secure-entertainment.com) if you have any questions.

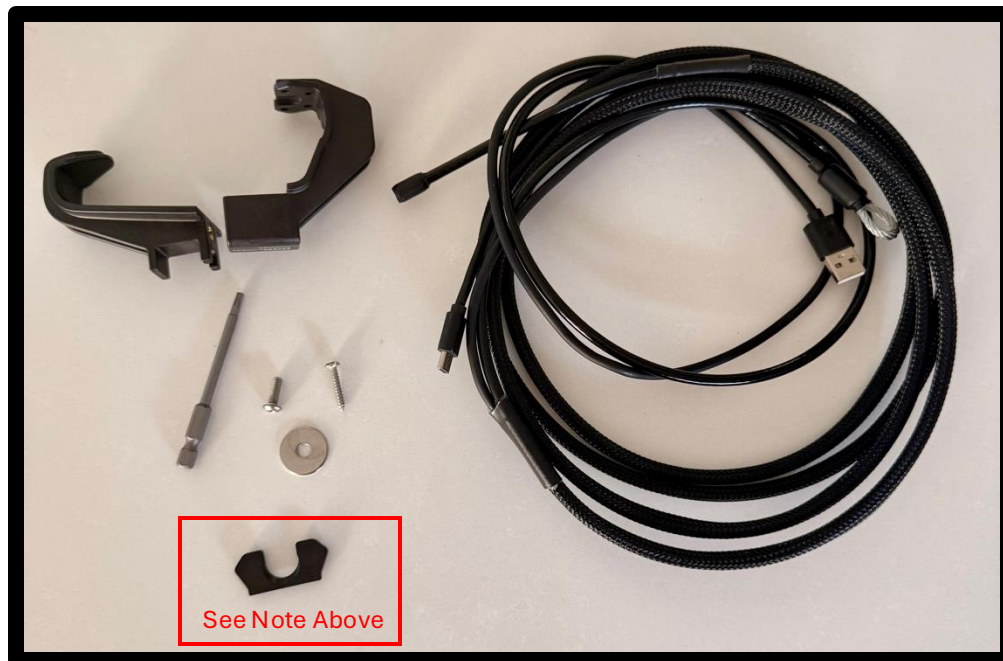
US Patent: 11,103,796

## Parts Included:

- Controller Lock Bracket
- 10 Foot USB and security cable (wrapped together in wire loom)
- Security screw (for securing bracket around the controller)
- Security screw (for attaching security cable to a secure surface)
- Washer (for attaching security cable to a secure surface)
- Security screwdriver bit (1 per order of 10 or less. More provided for larger orders)
- **Black Spacing Insert for XBOX One and XBOX Elite Controller (Not used on XBOX Series S/X Controllers) Discard if using XBOX Series S or X Controllers**

## Not Included:

- Screwdriver (any screwdriver with interchangeable bits will work)
- Drill bit and drill



## Safety Precautions

- Be sure to secure the security cable to a secure surface that will withstand the tension of the cables being pulled.
- Use caution and be aware of trip hazards created by cables
- Contains small parts (screws and screwdriver bits)
- If using with a Secure Entertainment Security case, Do not attach security cable directly to the case.



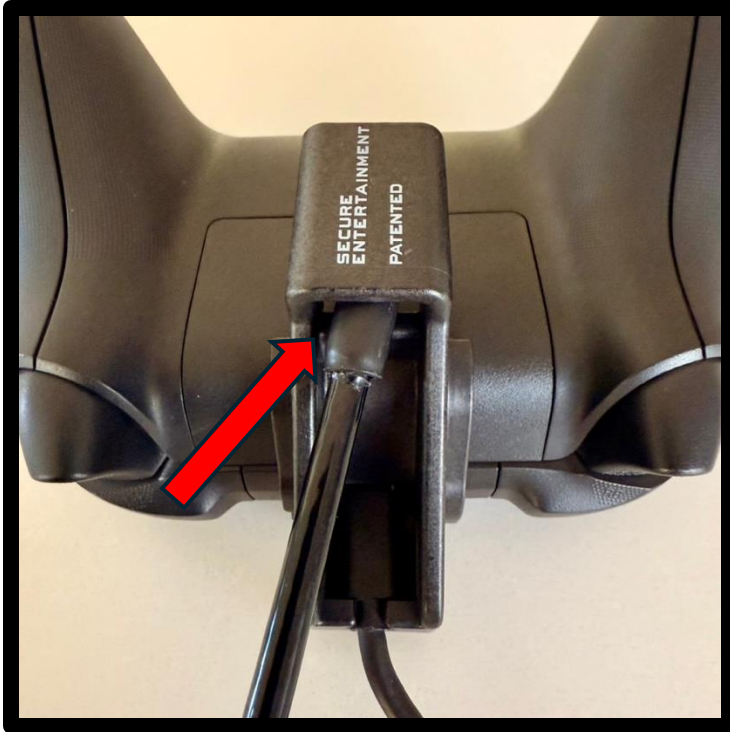
## XBOX Series S/X Controller Security Tether Installation Instructions



- Take the larger piece of the controller bracket and insert the USB Cable into the channel . Pull the USB Cable through and plug the USB Cable into the controller.
- Slide the controller bracket onto the controller and make sure the round portion on the USB cable fits into the round hole on the controller bracket (highlighted in red).



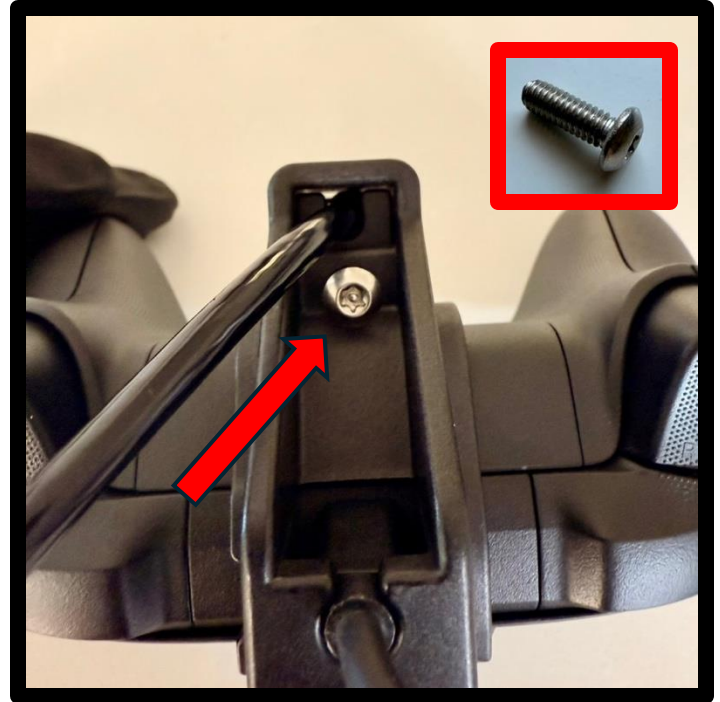
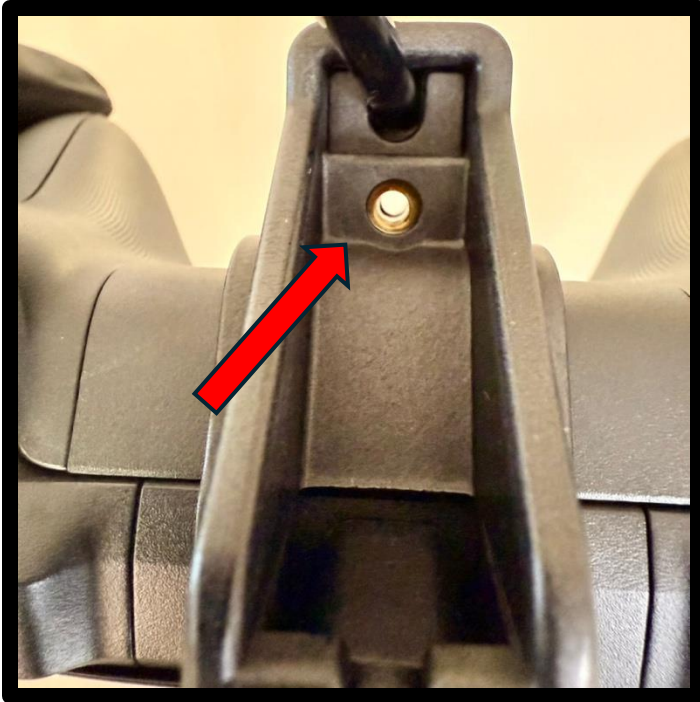
## XBOX Series S/X Controller Security Tether Installation Instructions



- Turn over the controller and take the barrel end of the security cable and insert it through the hole on the bracket.
- Take the smaller half of the controller bracket and insert the barrel into the channel.
- Slide the two pieces together to secure the security cable into the bracket.



# XBOX Series S/X Controller Security Tether Installation Instructions



- Tilt up the controller and you will see the hole for the security screw.
- Insert the security screw into the hole and use the security bit to secure the two pieces of the bracket together.

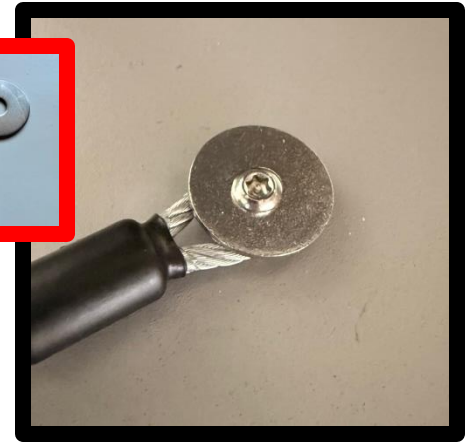
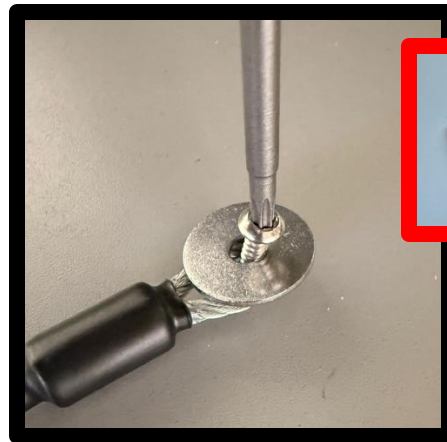
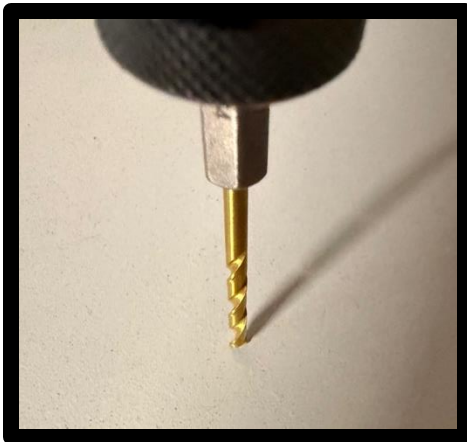


# XBOX Series S/X Controller Security Tether Installation Instructions

## Fully Assembled



## Security Cable Screw Installation



- Pre-drill the hole that you will be using to attach the security cable using the provided security screw and washer. Insert the security screw into the hole of the washer and place this on top of the eyelet on the security cable and use a provided security bit to screw in the screw into the secure surface.
- Plug in the usb cable to the game console and your gamers are ready to play!